



AVON | WEST
S T R A T F O R D

The Cressida

Square Footage: 2,045

Bedrooms: 3

Bathrooms: 2

Storeys: 2

Lot Width: 61 ft.

3 Bedroom, 2 storey, oversized single car garage, 2 baths, main floor master, large second storey family room, main floor dining room and main floor living room.



Division of Werner Bromberg Ltd.

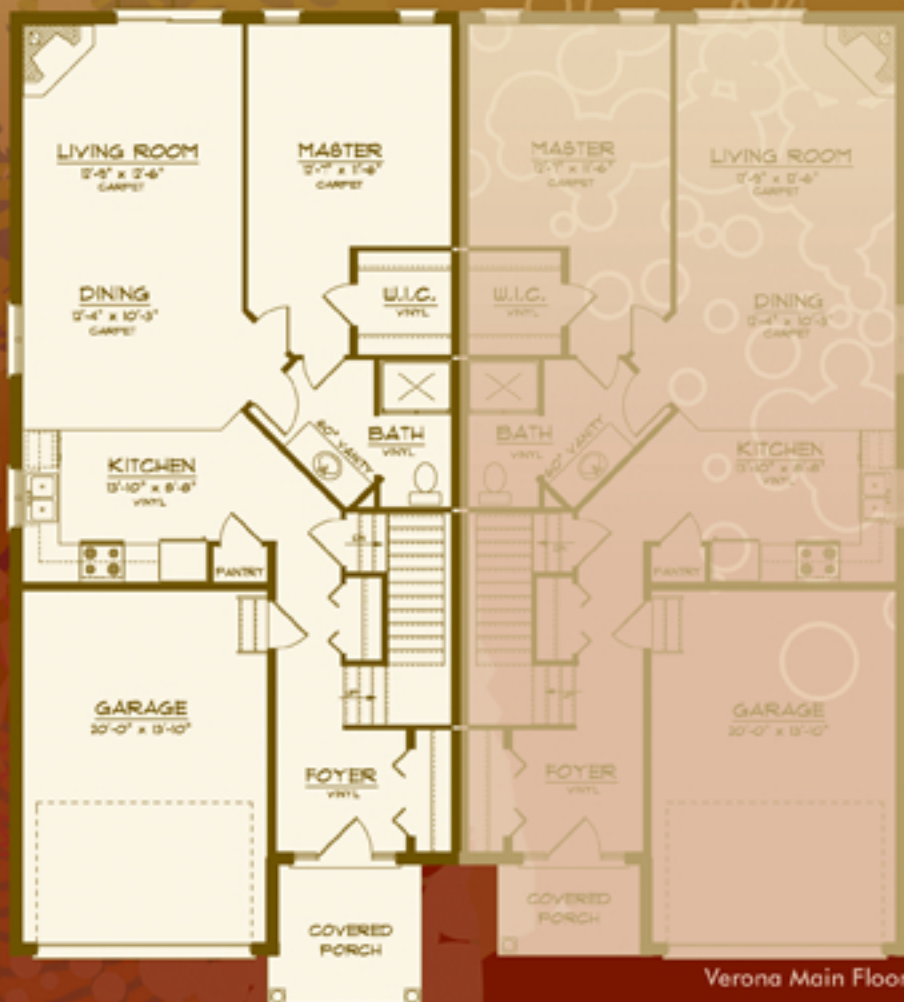


www.bromberghomes.com

AVON | WEST
STRAITFORD

The Cressida

2,041 sq. ft.



Cressida
Main Floor
1,035 Sq. Ft.

Verona Main Floor



Cressida
Upper Floor
1,006 Sq. Ft.

Verona Upper Floor

All drawings are artist concepts of the final product and may be revised and/or improved as necessitated by Architectural controls. All floor plans are approximate dimensions. Floor areas shown include "open to below" but do not include garage or basement areas. E. & O. E.

**Bromberg
Homes**
Division of Werner Bromberg Ltd.

www.bromberghomes.com